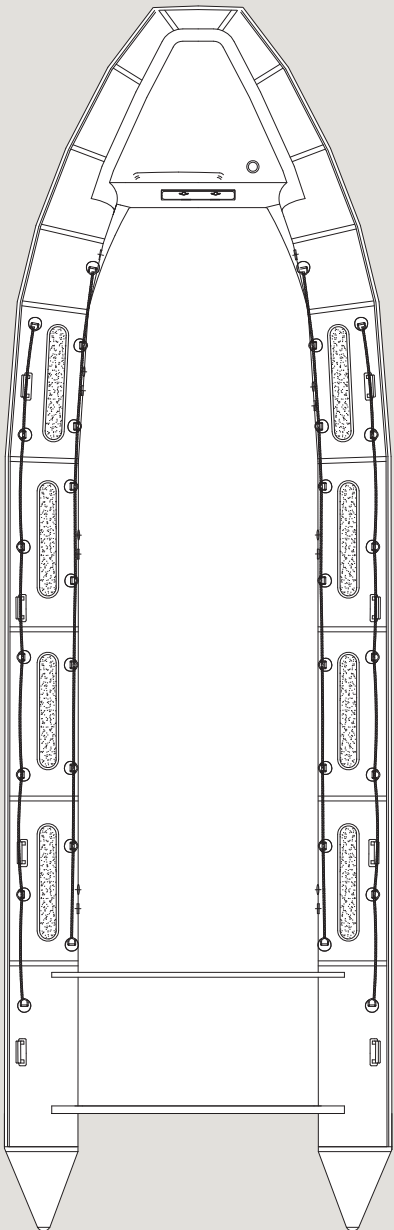


1000

IMPACT



SPECIFICATIONS

	<i>IMPERIAL</i>	<i>METRIC</i>
• LOA	32' 10"	10.0 m
• Length Inside	25' 7"	7.80 m
• Beam	10' 8"	3.25 m
• Beam Inside	6' 9"	2.06 m
• Tube Diameter	1' 10"	0.56 m
• No. of Chambers	7	–
• Weight Capacity	10,571 lbs	4795 kg
• Person Capacity	38	–
• Recommended Horsepower	600 hp	447 kW
• Max Horsepower	760 hp	560 kW
• Min Horsepower	450 hp	336 kW
• Max Engine Weight	1907 lbs	865 kg
• Total Boat Weight (excl. engine)	4335 lbs	1966 kg
• Fuel Capacity	(2) 288 gal	(2) 545 L

STANDARD FEATURES

- Heavy duty fiberglass hull
- Commercial-grade tubes made with exclusive AKRON TPE® fabric
- Heavy duty inflation valves and pressure relief valves
- Non-slip molded into gel coated deck and applied to tubes
- Haze gray gelcoat
- Heavy duty rubbing strake
- Handles (8)
- Bow locker
- Elephant trunk deck drains
- External lifelines
- Hull drain plug
- Internal lifelines
- Lifting handles
- SS bow / stern eyes
- Safety relief valves
- Stern lifting / towing points
- Tube reinforcements
- Under deck fuel tank
- Below deck storage
- Manual collar pump
- Automatic electric bilge pump
- Tube repair kit