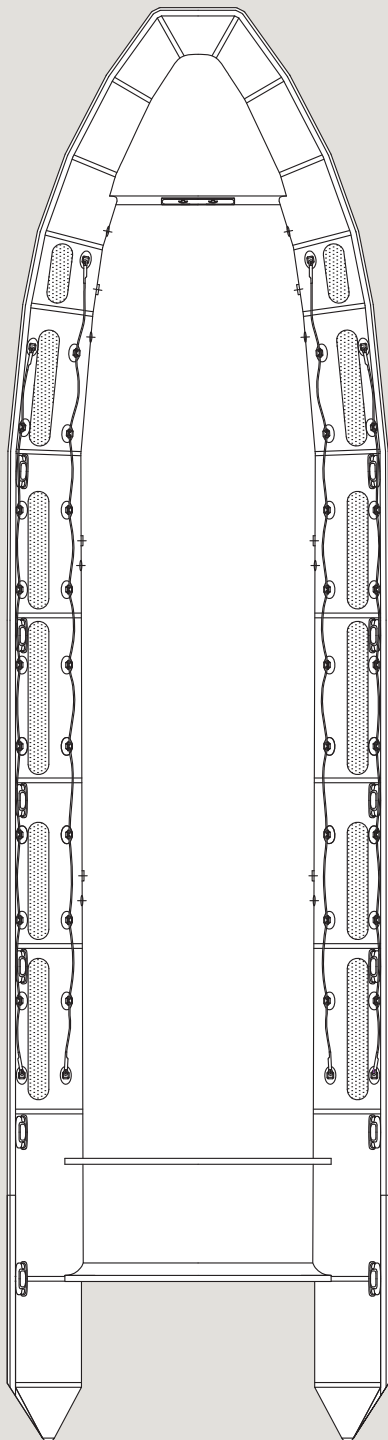


# 1200

# IMPACT



## SPECIFICATIONS

	<i>IMPERIAL</i>	<i>METRIC</i>
• LOA	39' 3"	11.95 m
• Length Inside	35' 9"	10.9 m
• Beam	9' 10"	3.0 m
• Beam Inside	5' 11"	1.80 m
• Tube Diameter	1' 10"	0.56 m
• No. of Chambers	9	–
• Weight Capacity	12,676 lbs	5750 kg
• Person Capacity	45	–
• Recommended Horsepower	700 hp	522 kW
• Max Horsepower	1000 hp	745 kW
• Min Horsepower	500 hp	373 kW
• Max Engine Weight	2204 lbs	1000 kg
• Total Boat Weight (excl. engine)	7055 lbs	3200 kg
• Fuel Capacity	(2) 288 gal	(2) 545 L

## STANDARD FEATURES

- Heavy duty fiberglass hull
- Commercial-grade tubes made with exclusive AKRON TPE® fabric
- Heavy duty inflation valves and pressure relief valves
- Non-slip molded into gel coated deck and applied to tubes
- Haze gray gelcoat
- Heavy duty rubbing strake
- Bow handle (on tube)
- Bow locker
- Elephant trunk deck drains
- External lifelines
- Hull drain plug
- Internal lifelines
- Lifting handles
- SS bow / stern eyes
- Safety relief valves
- Stern lifting / towing points
- Tube reinforcements
- Under deck fuel tank
- Below deck storage
- Manual collar pump
- Automatic electric bilge pump
- Tube repair kit