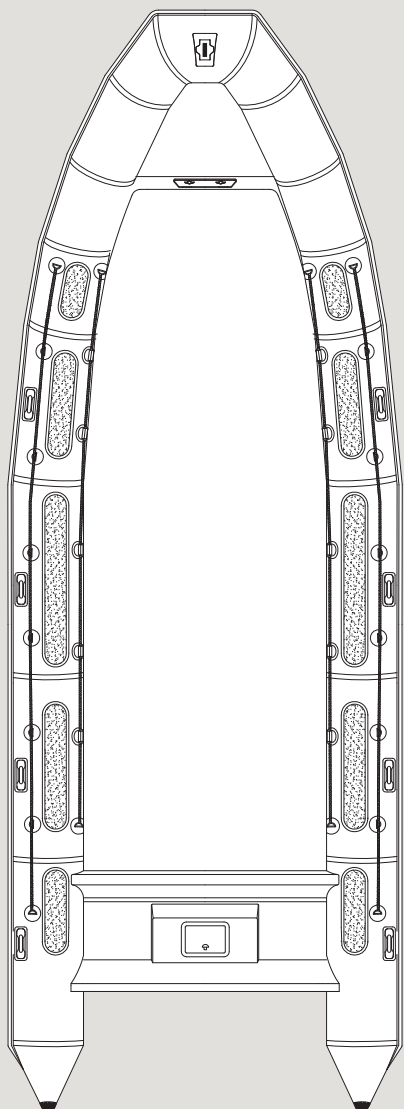


# 850

# IMPACT



The 850 Impact features spacious below-deck storage and a host of available options to turn this mild-mannered RIB into a screaming first responder. The deep-V hull of the 850 contributes to a smooth ride in rough seas while its inflated collar provides superior lateral stability, shock absorption and additional flotation. Shown with options.



## SPECIFICATIONS

	<i>US</i>	<i>METRIC</i>
• LOA	27' 11"	8.50 m
• Length Inside	22' 8"	6.91 m
• Beam	10' 1"	3.07 m
• Beam Inside	6' 4"	1.93 m
• Tube Diameter	1' 10"	0.56 m
• No. of Chambers	7	–
• Weight Capacity	4043 lbs	1834 kg
• Person Capacity	17	–
• Recommended Horsepower	300 hp	220.6 kW
• Max Horsepower	500 hp	373 kW
• Min Horsepower	300 hp	220.6 kW
• Max Engine Weight	1400 lbs	636 kg
• Total Boat Weight (excl. engine)	3413 lbs	1548 kg
Dimensions (Packed):		
• Length	26' 3"	8.00 m
• Width	8' 6"	2.60 m
• Height	5' 3"	1.60 m
• Fuel Capacity	157 gal	594 L

## STANDARD FEATURES

- Heavy-duty fiberglass hull
- Commercial-grade tubes made with exclusive polyurethane fabric
- Heavy-duty inflation valves and pressure relief valves
- Non-slip molded into gel coated deck and applied to tubes
- Haze gray gelcoat
- Heavy-duty rubbing strake
- Handles (2)
- Bow locker
- Elephant trunk deck drains
- External lifelines
- Hull drain plug
- Internal lifelines
- Lifting handles
- SS bow / stern eyes
- Safety relief valves
- Stern lifting / towing points
- Tube reinforcements
- Under-deck fuel tank
- Below-deck storage
- Manual collar pump
- Automatic electric bilge pump
- Tube repair kit

This is only a partial list of standard features. To see the complete list, please contact your sales representative. Specifications are approximate and subject to variance.