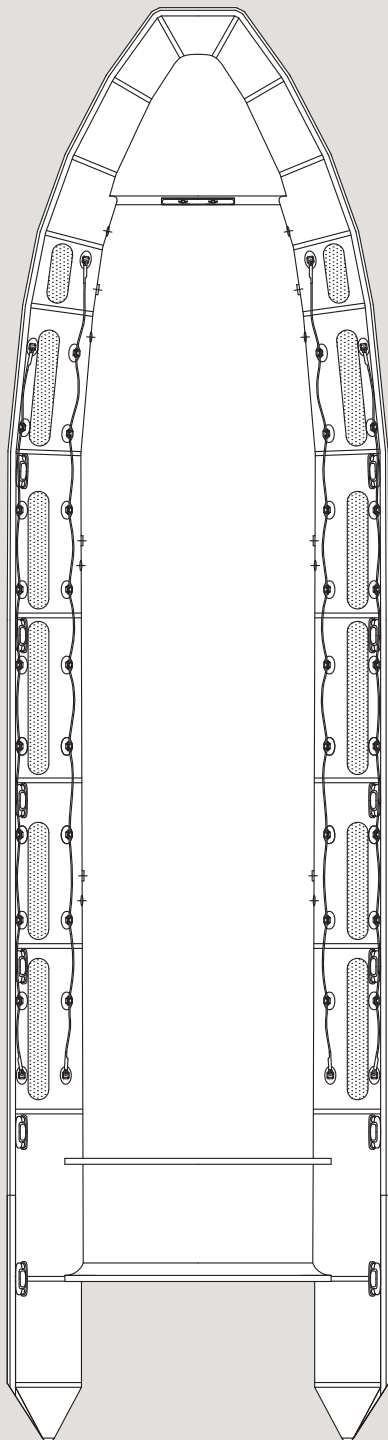


1200

IMPACT



The 1200 is a beast. Pure and simple. Just shy of 40 feet in length, the 1200 features a deep-V fiberglass hull, commercial-grade inflatable polyurethane collar and I/O propulsion. Combined with twin 144-gallon fuel tanks, she is capable of long-distance missions without the need to refuel. Shown with options.

SPECIFICATIONS

	<i>US</i>	<i>METRIC</i>
• LOA	39' 3"	11.95 m
• Length Inside	35' 9"	10.9 m
• Beam	10' 8"	3.25 m
• Beam Inside	6' 9"	2.06 m
• Tube Diameter	1' 10"	0.56 m
• No. of Chambers	9	–
• Weight Capacity	5242 lbs	1937 kg
• Person Capacity	20	–
• Recommended Horsepower	700 hp	522 kW
• Max Horsepower	1000 hp	745 kW
• Min Horsepower	500 hp	373 kW
• Total Boat Weight (excl. engine)	5202 lbs	2360 kg
• Fuel Capacity	(2) 288 gal	(2) 545 L

STANDARD FEATURES

- Heavy-duty fiberglass hull
- Commercial-grade tubes made with exclusive polyurethane fabric
- Heavy-duty inflation valves and pressure relief valves
- Non-slip molded into gel coated deck and applied to tubes
- Haze gray gelcoat
- Heavy-duty rubbing strake
- Bow handle (on tube)
- Bow locker
- Elephant trunk deck drains
- External lifelines
- Hull drain plug
- Internal lifelines
- Lifting handles
- SS bow / stern eyes
- Safety relief valves
- Stern lifting / towing points
- Tube reinforcements
- Under-deck fuel tank
- Below-deck storage
- Manual collar pump
- Automatic electric bilge pump
- Tube repair kit

This is only a partial list of standard features. To see the complete list, please contact your sales representative. Specifications are approximate and subject to variance.