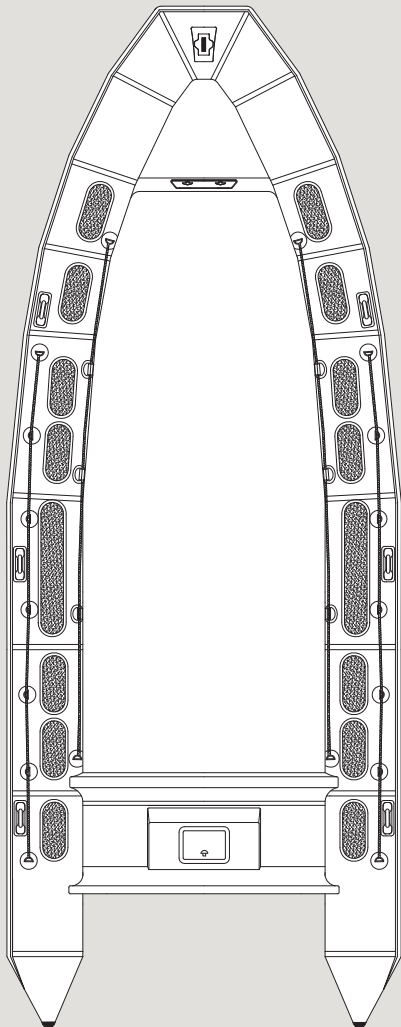


750

IMPACT



SPECIFICATIONS

	<i>IMPERIAL</i>	<i>METRIC</i>
• LOA	24' 7"	7.49 m
• Length Inside	19' 8"	6.0 m
• Beam	9' 4"	2.84 m
• Beam Inside	6' 4"	1.93 m
• Tube Diameter	1' 10"	0.56 m
• No. of Chambers	7	–
• Weight Capacity	7002 lbs	3176 kg
• Person Capacity	22	–
• Recommended Horsepower	200 hp	147.1 kW
• Max Horsepower	300 hp	22.06 kW
• Min Horsepower	150 hp	110.3 kW
• Max Engine Weight	1323 lbs	600 kg
• Total Boat Weight (excl. engine)	3269 lbs	1483 kg
Dimensions (Folded):		
• Length	21' 4"	6.50 m
• Width	7' 10"	2.38 m
• Height	4' 11"	1.50 m
• Fuel Capacity	145 gal	550 L

STANDARD FEATURES

- Heavy duty fiberglass hull
- Commercial-grade tubes made with exclusive AKRON TPE® fabric
- Heavy duty inflation valves and pressure relief valves
- Non-slip molded into gel coated deck and applied to tubes
- Haze gray gelcoat
- Heavy duty rubbing strake
- Handles (6)
- Bow locker
- Elephant trunk deck drains
- External lifelines
- Hull drain plug
- Internal lifelines
- Lifting handles
- SS bow / stern eyes
- Safety relief valves
- Tube reinforcements
- Under deck fuel tank
- Below deck storage
- Manual collar pump
- Automatic electric bilge pump
- Tube repair kit