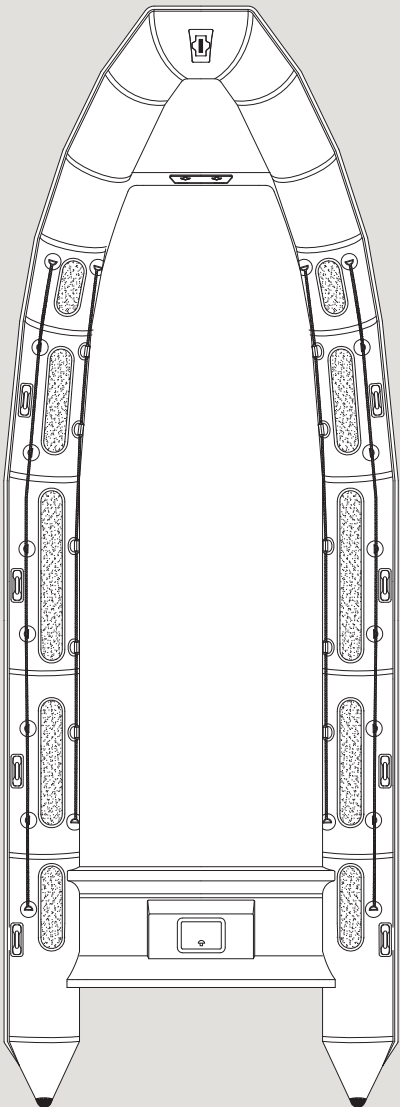


# 850

# IMPACT



## SPECIFICATIONS

	IMPERIAL	METRIC
• LOA	27' 11"	8.50 m
• Length Inside	22' 8"	6.91 m
• Beam	9' 10"	3.0 m
• Beam Inside	6' 4"	1.93 m
• Tube Diameter	1' 10"	0.56 m
• No. of Chambers	7	–
• Weight Capacity	10,538 lbs	4780 kg
• Person Capacity	26	–
• Recommended Horsepower	200 hp	147.1 kW
• Max Horsepower	500 hp	220.6 kW
• Min Horsepower	200 hp	147.1 kW
• Max Engine Weight	1554 lbs	705 kg
• Total Boat Weight (excl. engine)	3413 lbs	1548 kg
Dimensions (Packed):		
• Length	26' 3"	8.00 m
• Width	8' 6"	2.60 m
• Height	5' 3"	1.60 m
• Fuel Capacity	145 gal	550 L

## STANDARD FEATURES

- Heavy duty fiberglass hull
- Commercial-grade tubes made with exclusive AKRON TPE® fabric
- Heavy duty inflation valves and pressure relief valves
- Non-slip molded into gel coated deck and applied to tubes
- Haze gray gelcoat
- Heavy duty rubbing strake
- Handles (8)
- Bow locker
- Elephant trunk deck drains
- External lifelines
- Hull drain plug
- Internal lifelines
- Lifting handles
- SS bow / stern eyes
- Safety relief valves
- Stern lifting / towing points
- Tube reinforcements
- Under deck fuel tank
- Below deck storage
- Manual collar pump
- Automatic electric bilge pump
- Tube repair kit